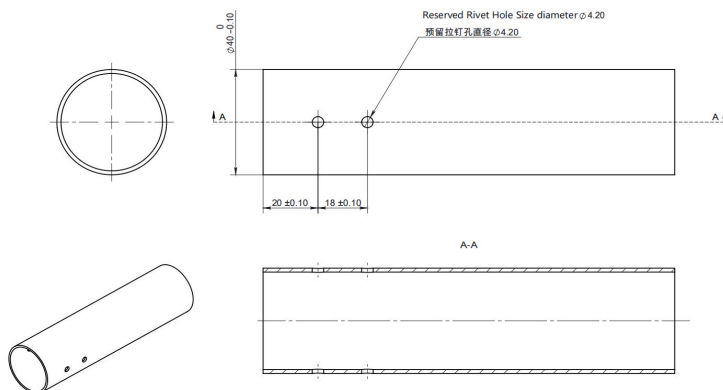


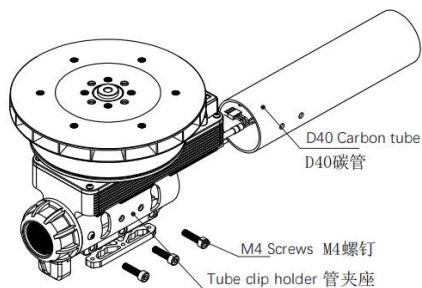
安装示意图 Installation Drawing

碳管加工示意 Carbon Tube Pre-processing

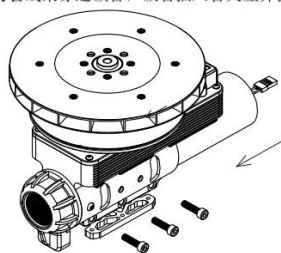


动力套装配示意 Assemble Steps

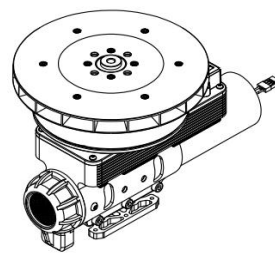
1. First, loosen the 3•M4 screws on the tube clip holder
1. 拧松管夹座上锁碳管的3颗M4螺钉



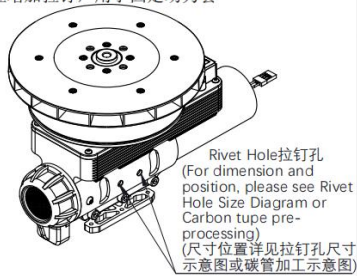
2. Pass the propulsion system cable bundle through the carbon tubes, insert the carbon tubes into the tube clip holder, and push them to the bottom.
2. 将动力套线束穿过碳管，碳管插入管夹座并推至底



3. Tighten the 3•M4 screws on the tube clip holder for fixing the carbon tube (The tightening torque should be 2.3N•m).
3. 拧紧管夹座上锁碳管的3颗M4螺钉 (推荐扭力值2.3N•m)



4. If necessary, holes can be drilled on the carbon tube, and holes reserved on the left/right side on the tube clip holder are for adding rivets to secure the propulsion system.
4. 如有需要，可在碳管上打孔，并在管夹座左右两侧预留孔位增加拉钉，用于固定动力套



Rivet Hole Size Diagram
拉钉孔尺寸示意图

