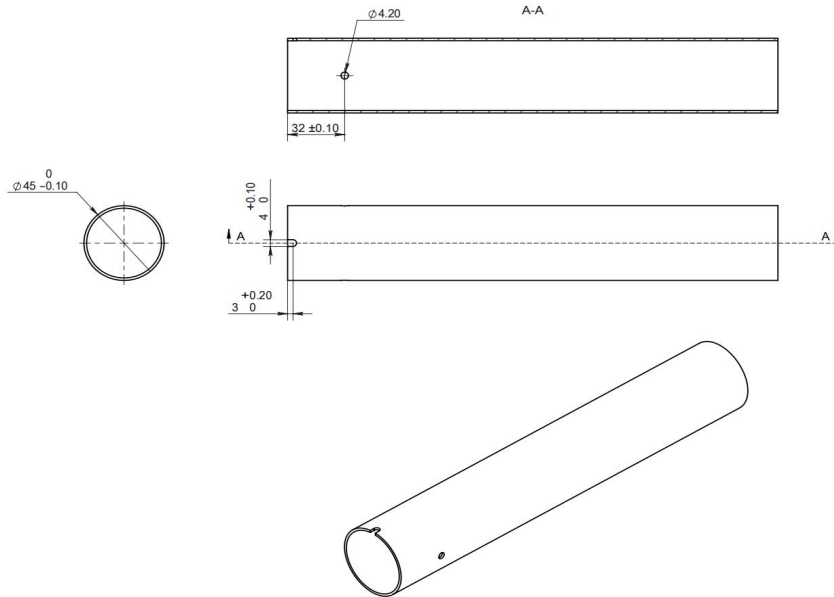


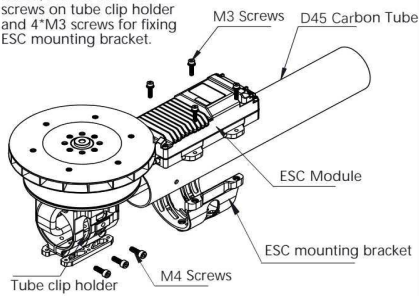
# Installation Drawing

## Carbon Tube Pre-processing

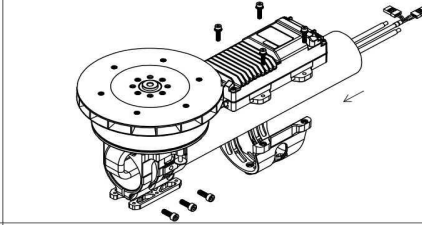


## Assemble Steps

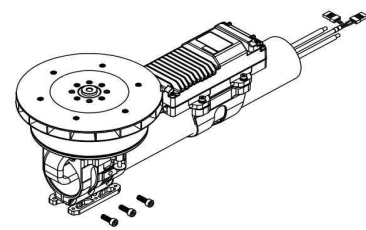
1. Take off the protective shield, loosen the 3\*M4 screws on tube clip holder and 4\*M3 screws for fixing ESC mounting bracket.



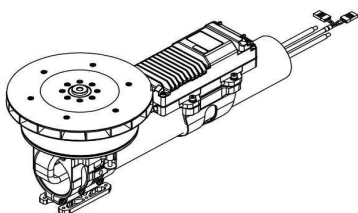
2. Pass the propulsion system cable bundle through the carbon tube, insert the carbon tube into the tube clip holder, and push it to the bottom (The end of the carbon tube need to be drilled for horizontal positioning. For detailed dimensions, please see Carbon Tube Pre-processing and product 3D drawing).



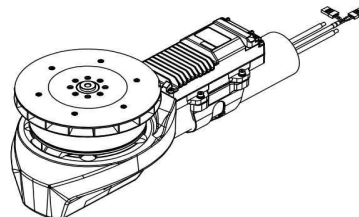
3. Screw on the 4\*M3 screws for connecting ESC module and ESC mounting bracket. Do not tighten them completely for now to facilitate the adjustment of the ESC position later.



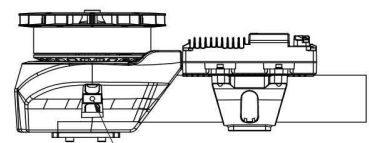
4. Tighten the 3\*M4 screws on the tube clip holder for fixing the carbon tube (pre-tighten the 3\*M4 screws with 1.8 N·m torque, and then tighten them with 2.3 N·m torque).



5. Put the protective shield on the tube clip holder, and use 2\* M4 screws to fix it on the tube clip holder from it's left & right side. At the end, adjust the position of ESC module to fit the protective shield, and tighten the 4\*M3 screws to fix the ESC module.



Adding rivets to secure the propulsion system



Rivet Hole  
(For detailed dimension and position, please see Dimension Figure)