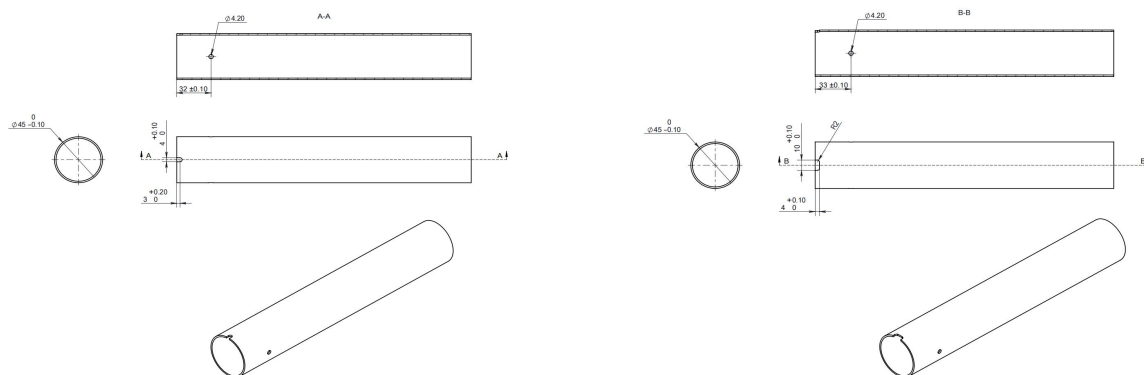


安装示意图 Installation drawing

碳管加工示意 Carbon tube pre-processing



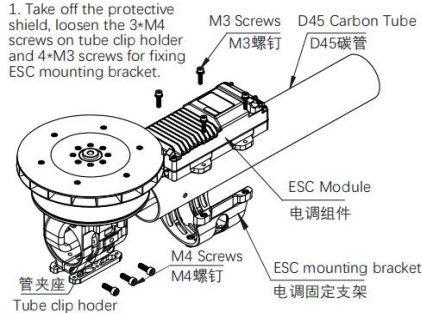
左为适配金属管夹座，右为适配注塑管夹座

Left is for matching metal tube clip holder, right is for matching injection molding tube clip holder.

动力套装配示意 Assemble Steps

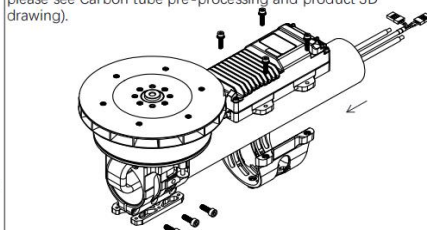
1. 取下发泡防护罩，拧松管夹座上锁碳管的3颗M4螺钉，以及锁电调固定支架的4颗M3组合螺钉

1. Take off the protective shield, loosen the 3×M4 screws on tube clip holder and 4×M3 screws for fixing ESC mounting bracket.



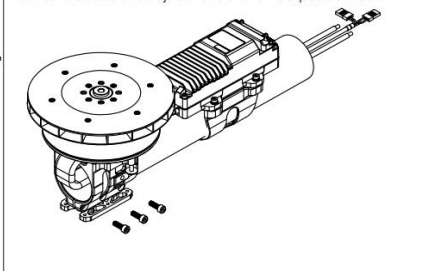
2. 将动力套线束穿过碳管，碳管插入管夹座并推至底(碳管末端需开孔用于水平定位，尺寸详见碳管加工示意图以及产品3D图)

2. Pass the propulsion system cable bundle through the carbon tubes, insert the carbon tubes into the tube clip holder, and push them to the bottom(The end of the carbon tube need to be drilled for horizontal positioning. For detailed dimensions, please see Carbon tube pre-processing and product 3D drawing).



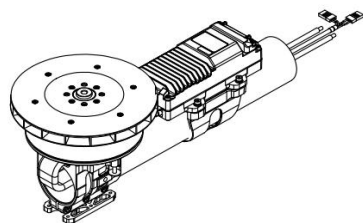
3. 将电调组件与电调固定支架之间连接的4颗M3螺钉拧上，暂不拧紧便于后续调整电调位置

3. Screw on the 4×M3 screws for connecting ESC module and ESC mounting bracket. Do not tighten them completely for now to facilitate the adjustment of the ESC position later.



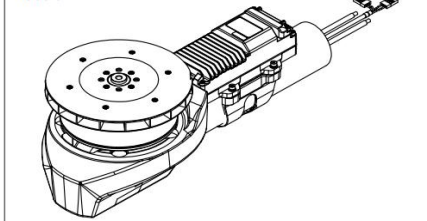
4. 拧紧管夹座上锁碳管的3颗M4螺钉(推荐扭力值2.3N·m，先按1.8NM扭力初固3颗M4螺钉，最后按2.3N·m扭矩拧紧)

4. Tighten the 3×M4 screws on the tube clip holder for fixing the carbon tube (pre-tighten the 3×M4 screws with 1.8 N·m torque, and then tighten them with 2.3 N·m torque).



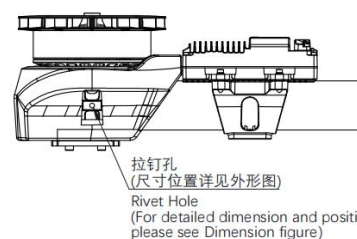
5. 将发泡防护罩套在管夹座上，并在防护罩左右2侧使用2PCS标配M4螺钉将其锁紧于管夹座上；最后调整电调位置至与发泡防护罩贴合，将4颗M3螺钉拧紧固定电调

5. Put the protective shield on the tube clip holder, and use 2×M4 screws to fix it on the tube clip holder from its left & right side. At the end, adjust the position of ESC module to fit the protective shield, and tighten the 4×M3 screws to fix the ESC module.



增加拉钉，用于固定动力套

Adding rivets to secure the propulsion system



拉钉孔
(尺寸位置详见外形图)
Rivet Hole
(For detailed dimension and position, please see Dimension figure)